

MatrixflexTM

NEW



Product features:

- Resorbable in 3 - 4 months
- High tear strength
- Biocompatible
- Easy adaptation to the defect
- Does not stick to instruments

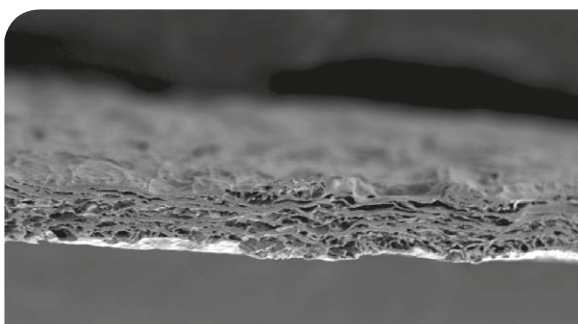
Matrixflex™ is a very tear-resistant, yet flexible, resorbable barrier membrane of porcine collagen origin. Its excellent handling property makes it easy to adapt to the bony defect. Matrixflex™ does not stick to surgical instruments.



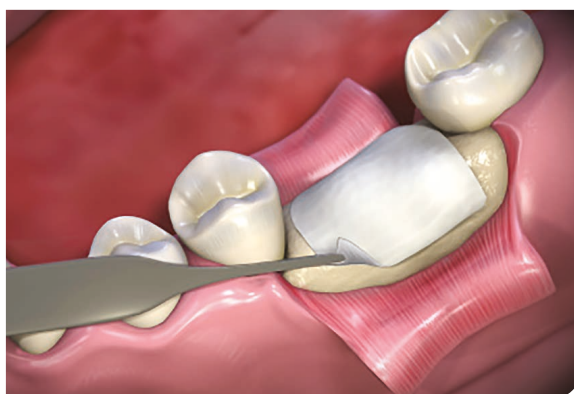
It is suitable for oral surgical procedures for guided bone and tissue regeneration.

Field of applications:

- Augmentation around dental implants
- Alveolar Ridge Augmentation
- Cover for intra-bony defects and root resection
- Periodontal Regeneration



Scanning electron micrograph of a dry Matrixflex™ (Cross section) at 50x magnification



REF	Size	Content
CDMPP1520	15 mm x 20 mm	1 membrane
CDMPP2030	20 mm x 30 mm	1 membrane
CDMPP3040	30 mm x 40 mm	1 membrane



Collagen Matrix, Inc.
 15 Thornton Road, Oakland, NJ 07436, USA · Tel: 201.405.1477
 Fax: 201.405.1355 · www.collagenmatrix.com